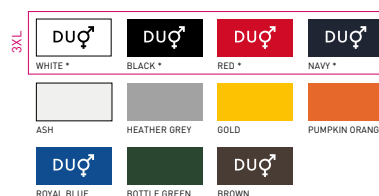


# B&C SAFRAN LSL - PU 414



## REGULAR FIT

- Polo manica lunga in Piqué
- Collo a coste 1x1
- Polsino a coste 1x1 con elastane
- Placchetta rinforzata 3 bottoni tono su tono
- Cuciture laterali
- Nastro di rinforzo



\* COLORI DISPONIBILI IN 3XL

100% cotone ring-spun **pettinato** preristretto

ASH: 99% COTONE RING-SPUN PETTINATO PRERISTRETTO / 1% VISCOSA  
HEATHER GREY: 90% COTONE RING-SPUN PETTINATO PRERISTRETTO / 10% VISCOSA

Fine Piqué

180 g/m<sup>2</sup>

S - M - L - XL - 2XL - 3XL\*

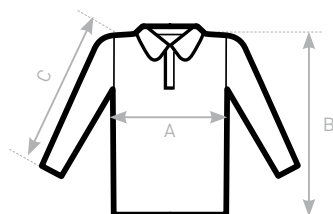
10 pz/pacco & 40 pz/cartone

\* DISPONIBILE SOLO IN WHITE, BLACK, NAVY E RED



DUO  
CONCEPT

con B&C Safran Pure  
LSL /women



## SIZES [CM]

B&C SAFRAN LSL PU 414	XS	S	M	L	XL	2XL	3XL
A HALF CHEST	-	50	53,5	57	60,5	64	67,5
B BODY LENGTH FROM NECK POINT	-	70,5	73	75,5	78	80,5	83
C SLEEVE LENGTH	-	64	65	66	67	68	69



OEKO-TEX®  
CONFIDENCE IN TEXTILES  
STANDARD 100  
1501003 Certexbel  
Tested for harmful substances.  
www.oeko-tex.com/standard100